



# **glivec®/gleevec® blood level testing**

A new initiative in the era of  
targeted therapy for Ph+ CML

Gleevec®/Glivec® (imatinib, formerly STI571) has sparked a revolution in cancer therapy by dramatically improving treatment for Philadelphia chromosome–positive chronic myeloid leukemia (Ph+ CML). Gleevec/Glivec has produced unprecedented response rates that are durable for years in patients with Ph+ CML. More than 8 years of experience with Gleevec/Glivec in clinical trials and 5 years in the post-approval setting have demonstrated that Gleevec/Glivec is not only active but also is easy to administer, safe, and tolerable. We have also learned that optimizing benefit with Gleevec/Glivec therapy involves ensuring that patients are taking the drug as prescribed by their healthcare provider.

This backgrounder provides information on the pharmacokinetics of Gleevec/Glivec and the potential utility of blood level testing to optimize therapy with Gleevec/Glivec in the treatment of Ph+ CML. There are 4 reasons why you may want to consider testing a patient's Gleevec/Glivec blood levels:

- You suspect that the patient may be nonadherent with Gleevec/Glivec.
- You suspect that the patient may be experiencing a drug-drug interaction.
- The patient is not responding to Gleevec/Glivec as well as you believe he or she should be.
- The patient is experiencing side effects that are unusually severe for the dose of Gleevec/Glivec he or she is taking.

CML is a clonal myeloproliferative disease characterized by the presence of the Philadelphia chromosome.<sup>1</sup> This karyotypic abnormality results from the reciprocal translocation of genetic material between chromosomes 9 and 22, t(9;22), and leads to a fusion gene, the product of which is the constitutively active protein-tyrosine kinase, BCR-ABL. Biochemical signal transduction pathways stimulated by BCR-ABL kinase activity are responsible for Ph+ CML oncogenesis.<sup>2</sup>

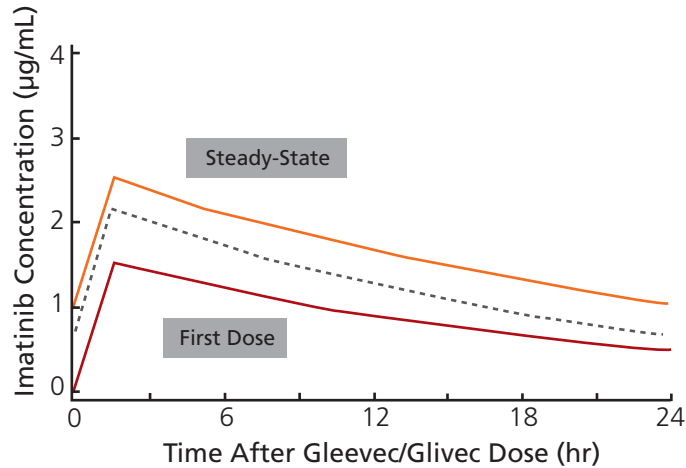
Gleevec/Glivec is a small-molecule tyrosine kinase inhibitor that targets BCR-ABL.<sup>3,4</sup> Inhibition of BCR-ABL kinase activity with Gleevec/Glivec underlies its clinical efficacy. Gleevec/Glivec is currently the standard of care for all phases of Ph+ CML.<sup>5-10</sup> In patients with Ph+ CML-chronic phase (CP), response rates to Gleevec/Glivec are high and durable, whereas patients in advanced phases of Ph+ CML may experience suboptimal responses and relapse more frequently.<sup>11</sup> Various factors have been shown to play a role in refractoriness to or relapse with Gleevec/Glivec therapy, including certain pharmacokinetic parameters of Gleevec/Glivec that can affect drug exposure.<sup>12</sup>

## **CLINICAL PHARMACOKINETICS OF GLEEVEC/GLIVEC**

The pharmacokinetic parameters of Gleevec/Glivec have been determined in patients with Ph+ CML from the phase 1 dose-finding study.<sup>13-15</sup> Gleevec/Glivec doses ranging from 25 mg to 1000 mg daily were tested. Gleevec/Glivec exposure, as defined by the area under the curve (AUC) of plasma concentration of drug versus time after drug administration, was found to be proportional to dose. A correlation was also observed with respect to Gleevec/Glivec dose and hematologic response in this trial.

Based on safety and efficacy results from the phase 3 International Randomized Study of Interferon and STI571 (IRIS) trial, Gleevec/Glivec 400 mg once daily is the recommended starting dose for patients with newly diagnosed Ph+ CML-CP.<sup>9</sup> Gleevec/Glivec dose escalation is recommended in cases of suboptimal response or loss of response.<sup>16,17</sup>

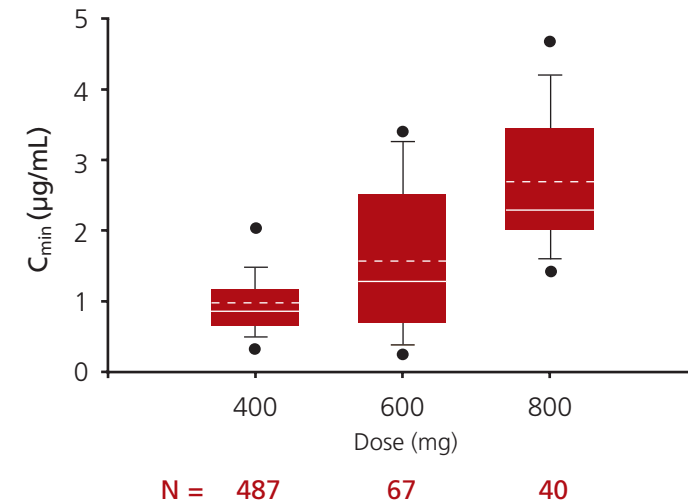
**Figure 1. Plasma concentration versus time profiles of Gleevec/Glivec in patients treated with Gleevec/Glivec 400 mg once daily<sup>18</sup>**



The lower and upper solid lines represent the pharmacokinetic profiles following the first dose on day 1 and at steady state.

Drug exposure is usually described by plasma AUC. The trough plasma concentration at steady state ( $C_{min}$ ) is another plasma drug measurement that is often used as the index for clinical monitoring of drug exposure because it is easy to obtain and varies less with time. At the recommended Gleevec/Glivec starting dose of 400 mg/day, the mean Gleevec/Glivec  $C_{min}$  is approximately 1.0 µg/mL (Figure 1).<sup>18</sup> At Gleevec/Glivec doses of 600 mg/day and 800 mg/day (administered as 400 mg twice daily), the mean Gleevec/Glivec  $C_{min}$ s are approximately 1.4 and 2.9 µg/mL, respectively. Administration of the 800 mg dose as 400 mg twice daily resulted in a higher  $C_{min}$  compared with that expected from the 400 mg and 600 mg once daily doses (Figure 2). Recent PK/PD analysis results showed that Gleevec/Glivec trough level correlated with clinical response,<sup>19, 20</sup> and it is recommended that Gleevec/Glivec trough level should be maintained above 1.0 µg/mL for clinical efficacy for patients with CML-CP.

**Figure 2. Pharmacokinetic trough levels of drug at indicated Gleevec/Glivec doses in patients with Ph+ CML<sup>14,18,21,22</sup>**



Note: Top and bottom walls of each box represent 75th and 25th percentiles. Whiskers (error bars) above and below the box indicate the 90th and 10th percentiles, and the dots represent 95th and 5th percentiles.

**Table 1. Trough Levels ( $C_{min}$ ) of Drug in Patients With Ph+ CML Treated With Gleevec/Glivec at 400-, 600-, and 800-mg Doses (800 mg Dosed as 400 mg Twice Daily)**

	400 mg Once Daily (n = 487)	600 mg Once Daily (n = 67)	400 mg Twice Daily (n = 40)
Mean, µg/mL ± SD	0.98 ± 0.53	1.37 ± 0.82	2.88 ± 1.09
Median, µg/mL [range]	0.88 [0.18, 0.39]	1.17 [0.35, 3.82]	2.93 [1.02, 6.45]
CV, %	53.1	59.6	38.0

SD, standard deviation; CV, coefficient of variance.

## **SUMMARY OF GLEEVEC/GLIVEC PHARMACOKINETIC CHARACTERISTICS**

### **Absorption**

Gleevec/Glivec is freely soluble in water and, after oral administration, is well absorbed from the gastrointestinal (GI) tract with a time to peak drug concentration of 1-3.3 hours. Gleevec/Glivec is 98% bioavailable. Absorption is the same between the tablet and capsule formulations and is not affected by food.<sup>14,23,24</sup> Gleevec/Glivec is absorbed primarily from the small intestine, and the extent of absorption may be affected by the GI anatomic abnormalities or disease states.<sup>25</sup>

### **Distribution**

Circulating Gleevec/Glivec is approximately 95% bound to plasma proteins, mainly albumin and alpha 1-acid glycoprotein (AAG). Plasma AAG levels have been shown to influence Gleevec/Glivec pharmacokinetics in patients with CML.<sup>26</sup> However, AAG level may not affect the effective free-drug level because this is determined by intrinsic clearance in patients. Individual differences in AAG level and plasma protein binding may account for at least some of the interpatient variability in the observed total plasma exposure to Gleevec/Glivec. Gleevec/Glivec is rapidly and extensively distributed into tissues, although with minimal penetration to the central nervous system.

### **Metabolism**

Gleevec/Glivec is metabolized by cytochrome P450 (CYP) 3A4 and CYP3A5. Its major metabolite, *N*-desmethyl metabolite (CGR74588), has similar biologic activity to the parent drug compound.

Gleevec/Glivec exposure has been shown to be influenced by drug-drug interactions with commonly prescribed drugs that are either CYP3A4 inhibitors or inducers.<sup>27-29</sup> In addition, drugs that are substrates of CYP2D6 and 2C19 may be affected by Gleevec/Glivec. An updated list of drugs that are CYP3A4 inhibitors or inducers and CYP2D6 and 2C19 substrates can be found on the internet at: <http://medicine.iupui.edu/flockhart>.

*Continued*

Examples of CYP3A4 inhibitors include aprepitant, clarithromycin, cyclosporine, erythromycin, itraconazole, ketoconazole, pimozide, grapefruit juice, and others. Enzyme inducers include barbiturates, carbamazepine, dexamethasone, phenytoin, St. John's wort, and others.

### **Elimination**

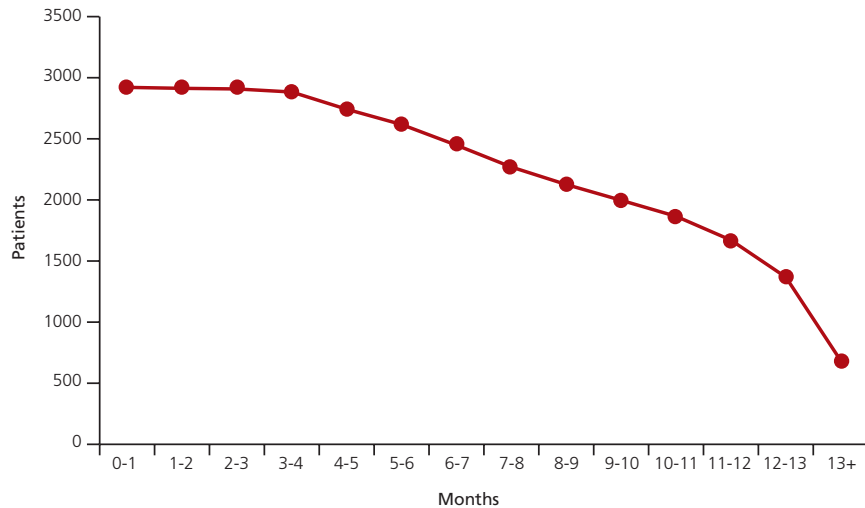
The elimination half-life of Gleevec/Glivec is approximately 18 hours, and thus it can be dosed once daily. The dose can be administered twice daily to minimize GI side effects or to maintain a low peak-to-trough concentration ratio for the high Gleevec/Glivec doses. Steady state (no change with time) is reached within a week.

## **ADHERENCE WITH GLEEVEC/GLIVEC**

With the advent of oral, targeted agents for cancer that are prescribed for use as chronic therapy,<sup>30,31</sup> the issue of adherence (compliance) to the prescribed regimen is emerging as a reason for concern by oncologists. One study showed that patients may overestimate their adherence to oral cancer therapies by a factor of 2 in discussions with their physicians.<sup>31</sup> Reasons for patients not taking their pills as prescribed include not fully understanding the importance of taking the medication as prescribed, experiencing unpleasant side effects, or simply forgetting to take the pills.<sup>30</sup> For patients with life-threatening diseases, 95% adherence or greater is generally considered the goal.<sup>30</sup>

Recent studies have revealed that adherence with Gleevec/Glivec for some patients with Ph+ CML is suboptimal.<sup>32</sup> A pharmacy record analysis of 4043 patients prescribed Gleevec/Glivec indicated an average adherence rate of 78% over the 24-month study period for patients with Ph+ CML. Patients were on therapy an average of 255 days over 24 months. Adherence to therapy began to decline after the first 4 months of treatment (Figure 3).

**Figure 3. Gleevec/Glivec adherence**



### **MONITORING OF PLASMA GLEEVEC/GLIVEC CONCENTRATIONS IN MANAGEMENT OF CML**

Gleevec/Glivec is the standard of care in CML. In the largest study ever performed in patients with newly diagnosed Ph+ CML-CP, 89% of patients randomized to Gleevec/Glivec are still alive with 5 years of trial follow-up.<sup>10</sup> Achieving maximum benefit with Gleevec/Glivec therapy may require optimal dosing as well as adherence to therapy. Pharmacokinetic factors such as individual patient variation in drug absorption and metabolism, interactions between prescribed medications, or other patient-related factors such as patients' GI abnormalities or disease conditions can also affect drug exposure and place maximum benefit of therapy at risk.

The minimum effective concentration of Gleevec/Glivec has not been fully defined, and the relationship between Gleevec/Glivec blood levels and outcome remains a subject of investigation. Further studies are also needed to characterize the safety/tolerability profiles of Gleevec/Glivec. Nevertheless, monitoring the drug levels in certain clinical situations as a first step to avoid low exposure would likely benefit patients. Maintaining trough levels above the average concentration at the intended clinical dose (1 µg/mL for 400 mg once daily dose), if tolerable, is recommended. Gleevec/Glivec blood levels below this average concentration should be avoided and trigger further inquiry.

While pharmacokinetic monitoring is widely used in many other branches of medicine, such as neurology, cardiology, and psychiatry, it has not been widely applied, to date, in clinical oncology practice. However, monitoring of Gleevec/Glivec would most likely be beneficial to physicians managing patients with Ph+ CML who demonstrate:

- Adherence concerns
- Suspicion of a drug-drug interaction
- A less-than-expected response to Gleevec/Glivec
- Side effects that are unusually severe for the dose of Gleevec/Glivec taken

Although Gleevec/Glivec is an easy drug to dose and administer, inadequate drug exposure due to pharmacokinetic factors or lack of adherence to therapy may compromise clinical outcomes. Blood level testing may offer a positive way for healthcare providers to initiate an “evidence-based” discussion of the importance of adherence with patients who are suspected of being non-adherent. Information regarding Gleevec/Glivec blood exposure during therapy has the potential to serve as a valuable tool to guide clinical decision making in the era of targeted therapy for cancer.

#### **ACKNOWLEDGEMENT**

Guest editors for this booklet were:

<b>Merrill J. Egorin, MD</b> University of Pittsburgh Cancer Institute Pittsburgh, Pennsylvania, USA	<b>Mathieu Molimard, MD, PhD</b> Université Victor Ségalen CHU de Bordeaux Bordeaux, France	<b>François-Xavier Mahon, MD, PhD</b> Université Victor Ségalen CHU de Bordeaux Bordeaux, France
--	--	---

## References

1. Goldman JM, Melo JV. Chronic myeloid leukemia—advances in biology and new approaches to treatment. *N Engl J Med*. 2003;349:1451-1464.
2. Ren R. Mechanisms of BCR-ABL in the pathogenesis of chronic myelogenous leukaemia. *Nat Rev Cancer*. 2005;5:172-183.
3. Buchdunger E, Zimmermann J, Mett H, et al. Inhibition of the Abl protein-tyrosine kinase in vitro and in vivo by a 2-phenylaminopyrimidine derivative. *Cancer Res*. 1996;56:100-104.
4. Druker BJ, Tamura S, Buchdunger E, et al. Effects of a selective inhibitor of the Abl tyrosine kinase on the growth of Bcr-Abl positive cells. *Nat Med*. 1996;2:561-566.
5. Kantarjian H, Sawyers C, Hochhaus A, et al. Hematologic and cytogenetic responses to imatinib mesylate in chronic myelogenous leukemia. *N Engl J Med*. 2002;346:645-652.
6. Sawyers CL, Hochhaus A, Feldman E, et al. Imatinib induces hematologic and cytogenetic responses in patients with chronic myelogenous leukemia in myeloid blast crisis: results of a phase II study. *Blood*. 2002;99:3530-3539.
7. Talpaz M, Silver RT, Druker BJ, et al. Imatinib induces durable hematologic and cytogenetic responses in patients with accelerated phase chronic myeloid leukemia: results of a phase 2 study. *Blood*. 2002;99:1928-1937.
8. Hughes TP, Kaeda J, Branford S, et al. Frequency of major molecular responses to imatinib or interferon alfa plus cytarabine in newly diagnosed chronic myeloid leukemia. *N Engl J Med*. 2003;349:1423-1432.
9. O'Brien SG, Guilhot F, Larson RA, et al. Imatinib compared with interferon and low-dose cytarabine for newly diagnosed chronic-phase chronic myeloid leukemia. *N Engl J Med*. 2003;348:994-1004.
10. Druker BJ, Guilhot F, O'Brien SG, et al. for the IRIS investigators. Five-year follow-up of imatinib therapy for newly diagnosed chronic myeloid leukemia in chronic-phase. *N Engl J Med*. 2006. In press.
11. Hochhaus A, La Rosee P. Imatinib therapy in chronic myelogenous leukemia: strategies to avoid and overcome resistance. *Leukemia*. 2004;18:1321-1331.
12. Deininger M. Resistance to imatinib: mechanisms and management. *J Natl Compr Canc Netw*. 2005;3:757-768.
13. Gschwind HP, Pfaar U, Waldmeier F, et al. Metabolism and disposition of imatinib mesylate in healthy volunteers. *Drug Metab Dispos*. 2005;33:1503-1512.
14. Peng B, Hayes M, Resta D, et al. Pharmacokinetics and pharmacodynamics of imatinib in a phase I trial with chronic myeloid leukemia patients. *J Clin Oncol*. 2004;22:935-942.
15. Druker BJ, Talpaz M, Resta DJ, et al. Efficacy and safety of a specific inhibitor of the BCR-ABL tyrosine kinase in chronic myeloid leukemia. *N Engl J Med*. 2001;344:1031-1037.
16. Gleevec® (imatinib mesylate) [package insert]. East Hanover, NJ: Novartis Pharmaceuticals Corporation; 2006.
17. Baccarani M, Saglio G, Goldman J, et al. Evolving concepts in the management of chronic myeloid leukemia. Recommendations from an expert panel on behalf of the European LeukemiaNet. *Blood*. 2006.
18. Schmidl H, Peng B, Riviere GJ, et al. Population pharmacokinetics of imatinib mesylate in patients with chronic-phase chronic myeloid leukaemia: results of a phase III study. *Br J Clin Pharmacol*. 2005;60:35-44.
19. Picard S, Titier K, Etienne G, et al. Trough plasma imatinib concentrations are associated with both cytogenetic and molecular responses to standard-dose imatinib in chronic myeloid leukemia [abstract]. Paper presented at: American Society of Hematology, December 9-12, 2006; Orlando, Fla. Abstract 2141.
20. Larson RA, Druker BJ, Guilhot F, et al. on behalf of the IRIS Study Group. Correlation of pharmacokinetic data with cytogenetic and molecular response in newly diagnosed patients with chronic myeloid leukemia in chronic phase (CML-CP) treated with imatinib—an analysis of IRIS study data [abstract]. Paper presented at: American Society of Hematology, December 9-12, 2006; Orlando, Fla. Abstract 429.
21. Blasdel C, Wang Y, Lagattuta T, Druker B, Letvak L, Egorin M. Therapeutic drug monitoring of imatinib and impact on clinical decision making [abstract]. Paper presented at: American Society of Hematology; December 9-13, 2006; Orlando, Fla.
22. Data on file. Novartis Pharmaceuticals. East Hanover, NJ, USA; 2005.
23. Nikolova Z, Peng B, Hubert M, et al. Bioequivalence, safety, and tolerability of imatinib tablets compared with capsules. *Cancer Chemother Pharmacol*. 2004;53:433-438.
24. Peng B, Dutreix C, Mehring G, et al. Absolute bioavailability of imatinib (Glivec) orally versus intravenous infusion. *J Clin Pharmacol*. 2004;44:158-162.
25. Beumer JH, Natale JJ, Lagattuta TF, Raptis A, Egorin MJ. Disposition of imatinib and its metabolite CGP74588 in a patient with chronic myelogenous leukemia and short-bowel syndrome. *Pharmacotherapy*. 2006;26:903-907.
26. Gambacorti-Passerini C, Zucchetti M, Russo D, et al. Alpha1 acid glycoprotein binds to imatinib (STI571) and substantially alters its pharmacokinetics in chronic myeloid leukemia patients. *Clin Cancer Res*. 2003;9:625-632.
27. Dutreix C, Peng B, Mehring G, et al. Pharmacokinetic interaction between ketoconazole and imatinib mesylate (Glivec) in healthy subjects. *Cancer Chemother Pharmacol*. 2004;54:290-294.
28. Bolton AE, Peng B, Hubert M, et al. Effect of rifampicin on the pharmacokinetics of imatinib mesylate (Gleevec, STI571) in healthy subjects. *Cancer Chemother Pharmacol*. 2004;53:102-106.
29. O'Brien SG, Meinhardt P, Bond E, et al. Effects of imatinib mesylate (STI571, Glivec) on the pharmacokinetics of simvastatin, a cytochrome p450 3A4 substrate, in patients with chronic myeloid leukaemia. *Br J Cancer*. 2003;89:1855-1859.
30. Osterberg L, Blaschke T. Adherence to medication. *N Engl J Med*. 2005;353:487-497.
31. Partridge AH, Avorn J, Wang PS, Winer EP. Adherence to therapy with oral antineoplastic agents. *J Natl Cancer Inst*. 2002;94:652-661.
32. Tsang J, Rudychev I, Pescatore SL. Prescription compliance and persistency in chronic myelogenous leukemia (CML) and gastrointestinal stromal tumor (GIST) patients (pts) on imatinib (IM). *J Clin Oncol*. 2006;24:330s. Abstract 6119.

CLEAR ADHESIVE CD POCKET

